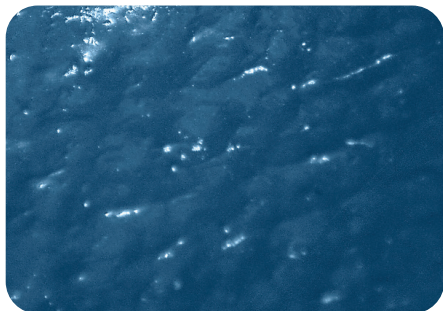
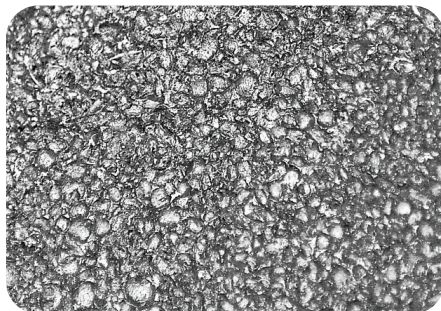


# GLOVE FINISH GUIDE



## Solid

Solid dip resists penetration of liquids and has an excellent dry grip.



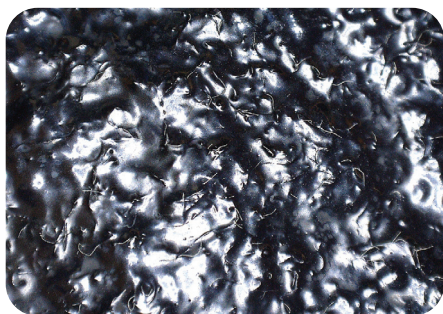
## Mach Finish

The Mach Finish dip has a higher grip rating, better wear resistance and more protection than solid or foam dipped gloves.



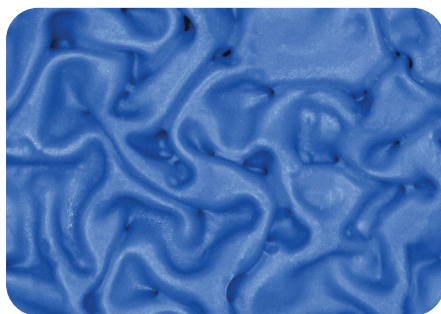
## Dotted

Dotted gloves provide an extra level of grip and extra abrasion resistance when compared to standard dipped gloves, ensuring a better user experience.



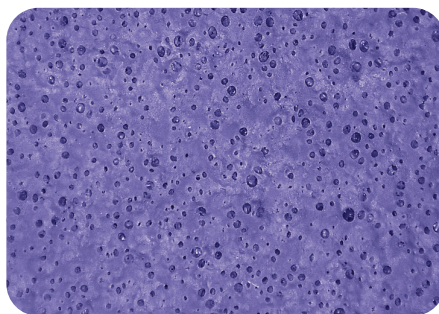
## Rough Finish

Rough finish gloves have an added level of grip and better wear resistance than solid dipped gloves.



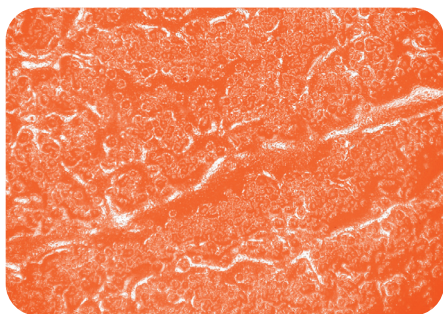
## Etched

The grip factor of etched gloves is not reduced by either wet or cold conditions.



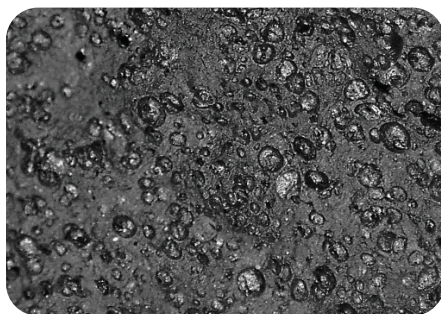
## Air-Injected Foam

While the wear resistance of air-injected foam may not be as high as other finish types, it offers enhanced dexterity and outstanding grip in wet/oily situations.



## Engineered Foam

When compared to other foam dipped gloves, engineered foam has an increased level of wear resistance, good dexterity and a lower cost.



## New Foam Technology

With a high degree of dexterity and grip in wet or oily conditions, New Foam Technology dipped gloves offer the user a comfortable, effective option.



## Xtreme Foam Technology

A performance blended foam dip, Xtreme Foam Technology offers excellent dexterity and grip in wet or oily conditions.